



0551 Joinery

Document version: 2.0

Published date: 30/11/2022

Disclaimer: The information within this document once printed/exported will be classed as an uncontrolled copy. Its currency must be checked by visiting the EFSG/Technical Standards website prior to using the information for any purposes.

Table of contents

0551 Joinery.....	0
Table of contents.....	1
List of tables	2
List of figures	2
00 Design Principles	3
0.01 Main considerations	3
Specification	3
01 General.....	3
02 Products	3
02.1 Joinery Materials and Components	3
02.4 Joinery Assemblies.....	3
02.5 Working Surface	4
03 Execution	5
04 Selections	5
04.1 Canteen Servery Bench	5
04.2 Canteen Food Preparation Bench.....	5
04.3 Toilet Wall Cupboard	7
04.4 Vanity Unit	7
04.5 Film Load Bench.....	7
04.6 Bench Cupboard / Counter.....	7
04.7 Library Service Desk - Secondary.....	7
04.8 Library Service Desk - Primary	8
04.9 Reception Counter - Administration	8
04.10 Seating Bench	9
04.11 Stage Control Cupboard.....	10
04.12 Storage Wall	10
04.13 Chemical Storage – Shelving Timber	11
04.14 Bag Racks	12
04.15 Rack with Hooks for Clothes	12
04.16 Rack, Peg Type	13
04.17 Guitar Racks.....	13
04.18 Rack Module for Sheets - Metal.....	14
04.19 Rack Module for Sheets – Timber	17
04.20 Shelving for Pottery	17
04.21 Rack for Discus	18

04.22 Rack for Shot Put	18
04.23 Rack for Javelins	19
04.24 Floor Batten for Spring Boards.....	19
04.25 Rack for Bats	19
04.26 Sports Shelving	20
04.27 Adjustable Shelving, Timber (Music Store).....	20
04.28 Acid bay Shelving	20
04.29 Plywood Shelving	21
04.30 Fan Support Brackets.....	21
04.31 Light Support Brackets	21
04.32 Timber Shelving, Adjustable - Chemical Store	21
04.33 Timber Shelving, Adjustable - Pantry.....	22
04.34 Shelf with Deep Edge - Toilet.....	23
04.35 Shelf – Toilet.....	23
04.36 Vanity Shelf.....	24
04.37 Basketball Backboard.....	25
04.38 Infill to side of B11	25
04.39 Exercise Bar (Barre)	25
04.40 Timber Stairs	26
Reference drawings.....	26

List of tables

No table of tables entries found.

List of figures

Figure 01: Rack Model for Sheets	15
Figure 02: Rack Timber Stack	16
Figure 03: Rack Modules for Sheets	26
Figure 04: Rack for Metal Lengths	27
Figure 05: Rack for Tools Storage.....	28

00 Design Principles

0.01 Main considerations

It is a requirement to undertake the [00 PLANNING AND DESIGN/0001R - DESIGN REFERENCE](#) and [GLOSSARY OF TERMS](#) information into all aspects of design, detailing and delivery when developing the content here within. Clear demonstration of adherence to these requirements is part of the services and will be called upon at key points in the project and during at the discretion of the Department of Education (DoE).

Specification

01 General

As per current NATSPEC.

02 Products

As per current NATSPEC except as follows:

02.1 Joinery Materials and Components

Joinery Timber

GUIDE NOTE: Use termite resistant species. Use Indigenous species wherever possible

- High pressure decorative laminated sheets
- Thickness (minimum) for vertical surfaces fixed to continuous background: 1.2mm

02.4 Joinery Assemblies

GUIDE NOTE: Refer to the NATSPEC Building Template / Worksection

Plinths

- Thickness:18mm.

Carcasses

- Thickness: 18mm

Drawer fronts and doors

- Maximum door size: 1800 high x 900mm wide
- Edges: To be covered with 2 mm ABS edge strips to match face finish
- Thickness: 18mm

Drawer bottoms

- Material: Ply slotted into front and sides, and fixed to back
- Thickness: 6mm

Ventilation

- Cupboards enclosing gas services must have adequate ventilation to prevent the build up of gas.

02.5 Working Surface

Laminated benchtops

- Material: 32mm thick high moisture resistant (HMR) particle board.
- Finish: High-pressure decorative laminated sheet
- Class: HGP
- Edge: 2 mm ABS edge strips to match benchtop finish

Stainless steel benchtops

- Material: 32mm thick HMR particleboard bench top with seamless stainless-steel finish and aluminium zinc coated steel sheet backing to the underside of the benchtop.
- Stainless steel finish:
- Type: 304
- Surface finish No.4
- Thickness: 1.2mm
- Fascia:
- 50mm (minimum) x 15mm return at bottom, returned to underside of bench top, to form a complete seal.

03 Execution

As per current NATSPEC.

04 Selections

As per current NATSPEC except as follows:

04.1 Canteen Servery Bench

GUIDE NOTE: Refer to [DESIGN COMPONENTS](#)

Fabricate servery bench and cupboards in the locations and to the sizes and profiles shown on drawings.

Laminated benchtop

- Material: 32mm thick high moisture resistant ([HMR](#)) particle board
- Finish: High-pressure decorative laminated sheet
- Class: HGP

Drawer and door hardware

- Cash Drawer: Plastic insert fitted into top drawer resting on screw fixed PVC film laminated battens to sides of drawer.

04.2 Canteen Food Preparation Bench

Benchtop support frame

- Bench top support
 - Legs: 31.8 x 31.8 x 1.6mm stainless SHS.
 - Spacings: 900mm (maximum) intervals
 - Fixing plates: Weld stainless steel fixing plates to the tops of all legs
 - Adjustable feet: Provide adjustable stainless-steel feet to all legs
- Installation: Securely fix to floor and to underside of bench top through pre-drilled holes

Rail/frame

- 31.8 x 31.8 x 1.6mm stainless SHS welded to legs

-
- Installation: Weld rails to legs
 - Height from finished floor level: 300mm (underside of rail)
 - Between front and back of all the intermediate legs
 - Two parallel rails for the full length 150mm in from the face side of the front and back bench legs

Benchtop

- Material: 32mm thick HMR particleboard bench top with seamless stainless-steel finish and aluminium zinc coated steel sheet backing to the underside of the benchtop
- Stainless steel finish: Type: 304
- Surface finish No.4
- Thickness: 1.2mm
- Fascia: 50mm (minimum) x 15mm return at bottom, returned to underside of bench top, to form a complete seal.

Optional shelf (island benches only)

- Dimensions: Full length x 335mm wide.
- Height: 300mm from top of counter top to top of small shelf.
- Provide a continuous anodised aluminium electrical cable duct (skirting duct) with end caps to underside of shelf.

Splashback

- 32mm thick HMR particleboard bench top with seamless stainless-steel finish between bench top and underside of electrical cable duct (skirting duct). The splashback can be either continuous with the bench top or separate with the joint between the bench top and splashback. Seal “gunned-in” with a waterproof sealant between bench top and splashback (if not continuous) and splashback and cable duct.
- Seal back of shelf assembly (includes splashback/shelf support, exposed ends of shelf and bench tops) with an impervious laminate.

Shelf support

- Front: 20mm (nominal) SHS or stainless-steel rods/tubes as shown on drawings
- Back: Continuous 18mm thick (nominal) HMR particleboard backing from top of bench to underside of shelf.
- Joint sealing: Fill all joints including bench support junction, shelf supports with waterproof sealant. Match finish.

04.3 Toilet Wall Cupboard

- Location: Accessible Toilet
- Construction: To comprise two horizontal sections of which the top section is to be lockable and the bottom section is to have two shelves adjustable at 250 mm centres.
- Size: 200 deep x 450 wide x 1500 mm high.
- Finish: Plastic laminate sheet applied to all internal and external surfaces.
- Hardware: D handles, catches, hinges and lock.

04.4 Vanity Unit

- Location: Accessible Toilet
- Construction: Fabricate to details as shown on the drawings. Secure to wall sitting unit on a 150 mm high recessed concrete plinth finished in ceramic tile.
- Access panel: For access to the hot water unit provide a removable panel, flush and matching. Fixing: Use 45 x 42 mm battens plugged and screwed to secure carcass of unit.

04.5 Film Load Bench

- Location: Darkroom
- Construction: Fabricate a wall mounted bench top.
- Finish: 1.2mm thick plastic laminate to top and edges Size: 450 mm wide x room dimension
- Height: 900 mm
- Front edge: 100 x 38 mm (nominal) timber fascia
- Installation: Screw fix on 75 x 25 mm hardwood support battens to walls on three sides.

04.6 Bench Cupboard / Counter

- Location:
- Construction:

04.7 Library Service Desk - Secondary

Location:

Construction

- Library counter service desk including adjustable shelves and cable management system.
 - Benchtop: 32mm thick high moisture resistant (HMR) particle board with plastic laminate finish and ABS edge strip
- Adjustable shelves
 - Location: Centre and one bay at each end of unit
 - Number: Two adjustable shelves to each bay

04.8 Library Service Desk - Primary

Location:

Construction

Benchtop: 32mm thick high moisture resistant (HMR) particle board with plastic laminate finish and ABS edge strip

- Installation:
 - Cut holes for cable management system and provide proprietary cable management grommets

Desk front: 25mm thick high moisture resistant (HMR) particle board with plastic laminate finish from the floor to underside of bench top.

- Installation:
 - Position bench front according to the plans.
 - Cut and fit.

04.9 Reception Counter - Administration

Location:

Construction

Counter: 32mm thick high moisture resistant (HMR) particle board with plastic laminate finish and ABS edge strip. Frame and line leg space recess.

Counter top

- Installation
 - Position counter top as shown on drawings
 - Cut and fit

- Secure to carcasses by screwing up through front and back blades of each bench unit

Shelf

- Installation
 - Position shelf as shown on drawings.
 - Cut and fit
 - Provide concealed or semi concealed support brackets at sufficient spacings to secure shelf and to prevent the shelf from distorting

Provide an integrated commercial grade window frame system with two fixed and two horizontal sliding sashes as shown on drawings.

- Recess the lower window track into the counter top/shelf.
- To each sash install a keyed operated window lock suitable for commercial sliding window system. Allow for the window/s to be locked at the fully closed position and partly opened positions of 100mm intervals. The intervals are to be regularly spaced for the full effective opening width.
- Provide fitted shims between lock and sash as required to ensure lock assembly does not hinder the sliding action of the sash.
- Keying: Keyed alike

GUIDE NOTE: Refer to [04 ENCLOSURE/0451 WINDOWS AND GLAZED DOORS](#) and [04 ENCLOSURE/0455 DOOR HARDWARE](#)

04.10 Seating Bench

Location:

Construction

Provide battens in the location and out of material, species, sizes and profiles shown on the drawings.

Fixing: Secure battens to brackets through pre-drilled holes in horizontal member with galvanised screws

04.11 Stage Control Cupboard

GUIDE NOTE: Co-ordinate with electrical engineer's requirements.

Construction

Construct cupboard using framing as specified in 0382 Light timber framing and to details as shown on the drawings. Construct bench as follows:

Cupboard:

- Size: 845 x 2185 long x 2400 mm high
- Frame: 75 x 50 mm
- Sheeting: 12 mm thick veneered plywood to walls and ceiling
- Jamb linings and pelmet: Construct out of 100 x 38 mm timber sections

Bench:

- Benchtop: 18 mm veneered particle board
- Cleats and front nosing: 50 x 25 mm
- Divisions and shelving: Veneered edge stripped particle board and as shown on the drawings. Dowel fix divisions to wall

Pin-up board:

- Facing: Washable finish
- Size: 900 x 450 mm
- Fixing: Screw fix to frame

Door: Provide an approved roller door to full extent of cupboard opening.

Hardware: Provide an approved roller door system complete with all fittings and locks and install on accordance with manufacturer's recommendations.

04.12 Storage Wall

GUIDE NOTE: Refer to [05 INTERIOR/0572 MISCELLANEOUSE FURNITURE](#)

Construction

Provide the unit in the location shown and construct out of the materials, species, sizes and profiles shown on the drawings or specified as follows:

Materials: Internal plywood all edge stripped.

- Grade: C-D
- Thickness: 19 mm

04.13 Chemical Storage – Shelving Timber

GUIDE NOTE: Refer to [DESIGN COMPONENTS](#) for medium and Large standardised science hub.

Location:

Construction

Carcass unit out of 19 mm thick DAR timber shelving with division and shelves supported on 50 x 25mm (nominal) timber rails and form a bottom shelf tray lined in lead. Fit two lockable timber glazed doors with metal track.

- Size: 1800 wide x 425 deep x 2100 mm high.
- Base:
- Supports: 100 x 50mm
- Kickboard: 25 mm (nominal) timber set back 50 mm

Lead lined shelf tray: Fix upstands to front and back and sheath in lead providing folded and sweated corners. Finish lead at top of upstand with batten.

- Lead weight: 25 kg/m²

Internal finish: All surfaces to shelves and cupboard in high gloss enamel Refer to 0671 Painting.

Sliding glazed doors: Assemble from timber rails and stiles

- Door head: 100 x 50 mm on flat
- Top rail: 138 x 41 mm
- Bottom rail: 185 x 41 mm
- Stiles: 115 x 41 mm

-
- Rebate: 10 x 20 mm

Lock: Fit to end of external leaf a deadlock with broaching cylinders

Finish: 2 coats of matt polyurethane to both doors internally and externally, pelmet and base. Refer to 0671 Painting.

Internal flushbolt: Fit to bottom rail of each internal leaf to engage with hole let into base.

Track: Refer to 0455 Door Hardware

Handles: Recessed flush pull handles, 2 per door. Refer to 0455 Door Hardware.

04.14 Bag Racks

GUIDE NOTE: Include location/s where bag racks are required. Refer to the [Educational Facilities Standards and Guidelines](#) (EFSG)

Location:

Construction

Battens: Fix with countersunk screws from under side of brackets.

- Size: 100 x 50 mm (nominal) D.A.R. Arris ends and top edges pencil round.

Frame: Refer to 0552 Metalwork – Fabricated.

04.15 Rack with Hooks for Clothes

Location:

GUIDE NOTE: Include location/s where rack with hooks for clothes are required. Refer to the EFSG

Construction

Fix timber rail securely to wall with countersunk screws.

Screw fix clothes hooks spaced at 600 mm centres or as shown on drawings.

- Length:
- Width: 75 mm (nominal)

- Thickness: 25 mm (nominal)
- Clothes hooks:
- Number:

Refer to [05 INTERIOR/0552 METALWORK - FABRICATED](#)

04.16 Rack, Peg Type

GUIDE NOTE: Include location/s where rack with hooks for clothes are required. Refer to the EFSG.

Location:

Construction

Fix timber rail securely to wall with 3 countersunk screws. Secure six 18 mm diameter evenly spaced pegs per rail.

- Length: 900 mm
- Height: 1500 mm from floor to centre of rack
- Width: 100 mm (nominal)
- Thickness: 25 mm (nominal)

04.17 Guitar Racks

Location:

Construction

Type: DAR timber peg rack or proprietary guitar mount rack designed for hanging guitars on wall.

Provide two separate guitar mount racks fixed to wall as shown on drawings. The racks can be either a specifically built peg rack made DAR timber or a proprietary guitar mount rack.

Description (DAR timber peg rack):

- Base (finished sizes - minimum): 300 x 100 x 30mm thick

-
- All edges to be either rounded or splayed
 - Pegs: Two parallel 25mm diameter (nominal) pegs 90mm apart protruding 150mm at an incline (upwards) of approximately 10 degrees.
 - Centrally located
 - Housed into base for the full thickness and securely fastened
 - Fully rounded (20mm dia) at each exposed end
 - Finish: Painted

Refer to 0671 Painting

Proprietary guitar mount racks

- Must be within the dimensions as described in the above timber peg rack specification
- Must not have sharp edges or corners. All corners and edges must be either rounded or splayed
- Slip on protective caps are not acceptable unless permanently fastened
- Factory finished and painted

Height: 1350mm from underside of rack to finished floor level

Fixing: Securely fixed to wall with non-corrosive metal fasteners and/or anchors.

- Minimum two fixing locations for each rack.

04.18 Rack Module for Sheets - Metal

Location: Wood Metal Store

Construction

Fabricate out of 18 mm thick edge stripped particleboard providing vertical divisions and a 100 mm high kickplate

- Backing: Sheet back with 7 mm Pinus structural A bond glueline plywood
- Base: 100x 50 mm (nominal) supports at 600 mm centres
- Kickboard: 100 x 25 mm (nominal) timber set back 50 mm

GUIDE NOTE: Refer to EFSG drawing below and include into appropriate project drawing package and number.

Do not use as a construction detail. Not to Scale (NTS)

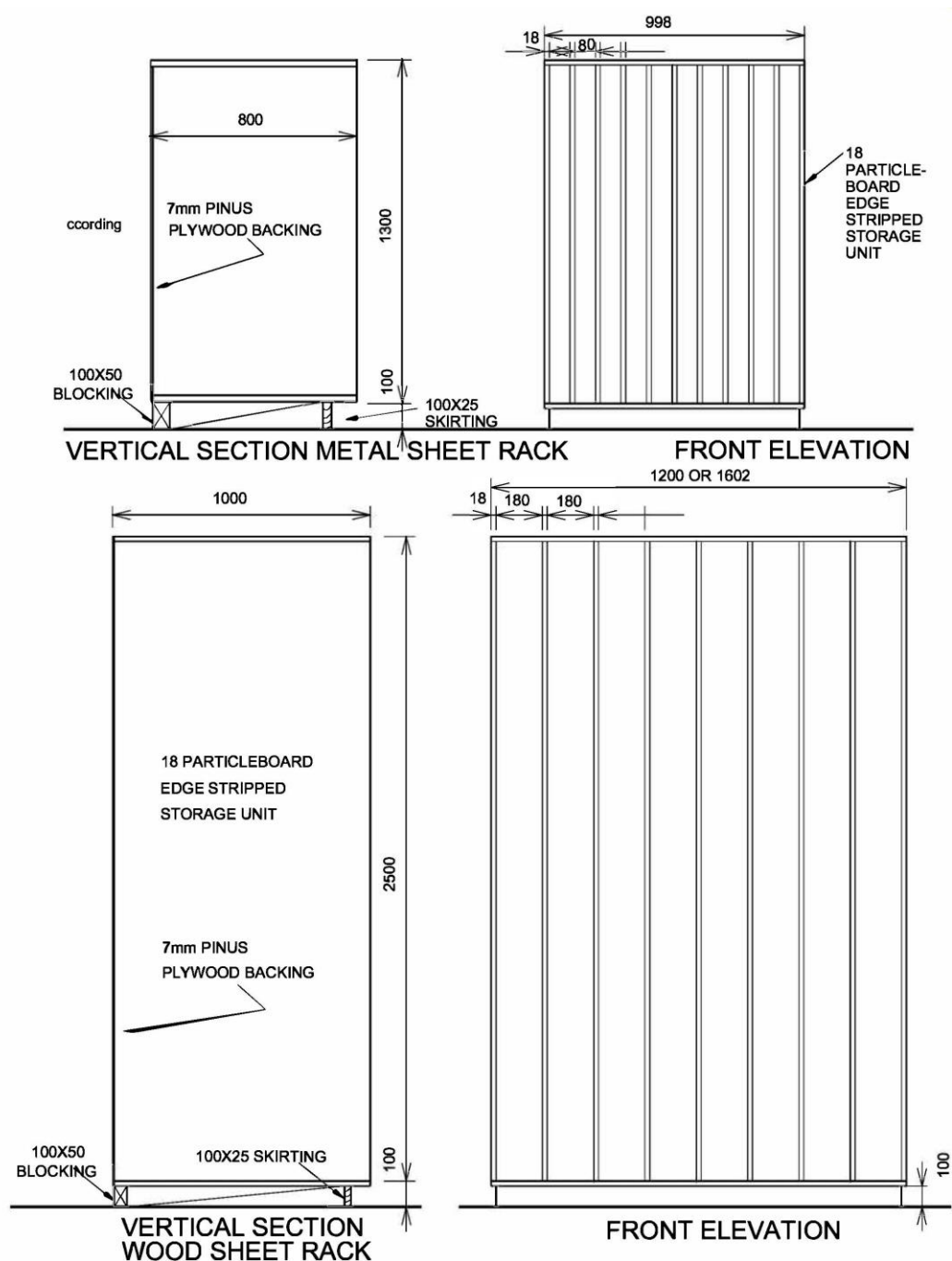


Figure 01: Rack Model for Sheets

- Size: > wide x > deep x 1400 mm high.

Rack, Timber Stack

GUIDE NOTE: Refer to EFSG drawing below and include into appropriate project drawing package and number. Include location where rack, timber stack is required.

Do not use as a construction detail. Not to Scale (NTS).

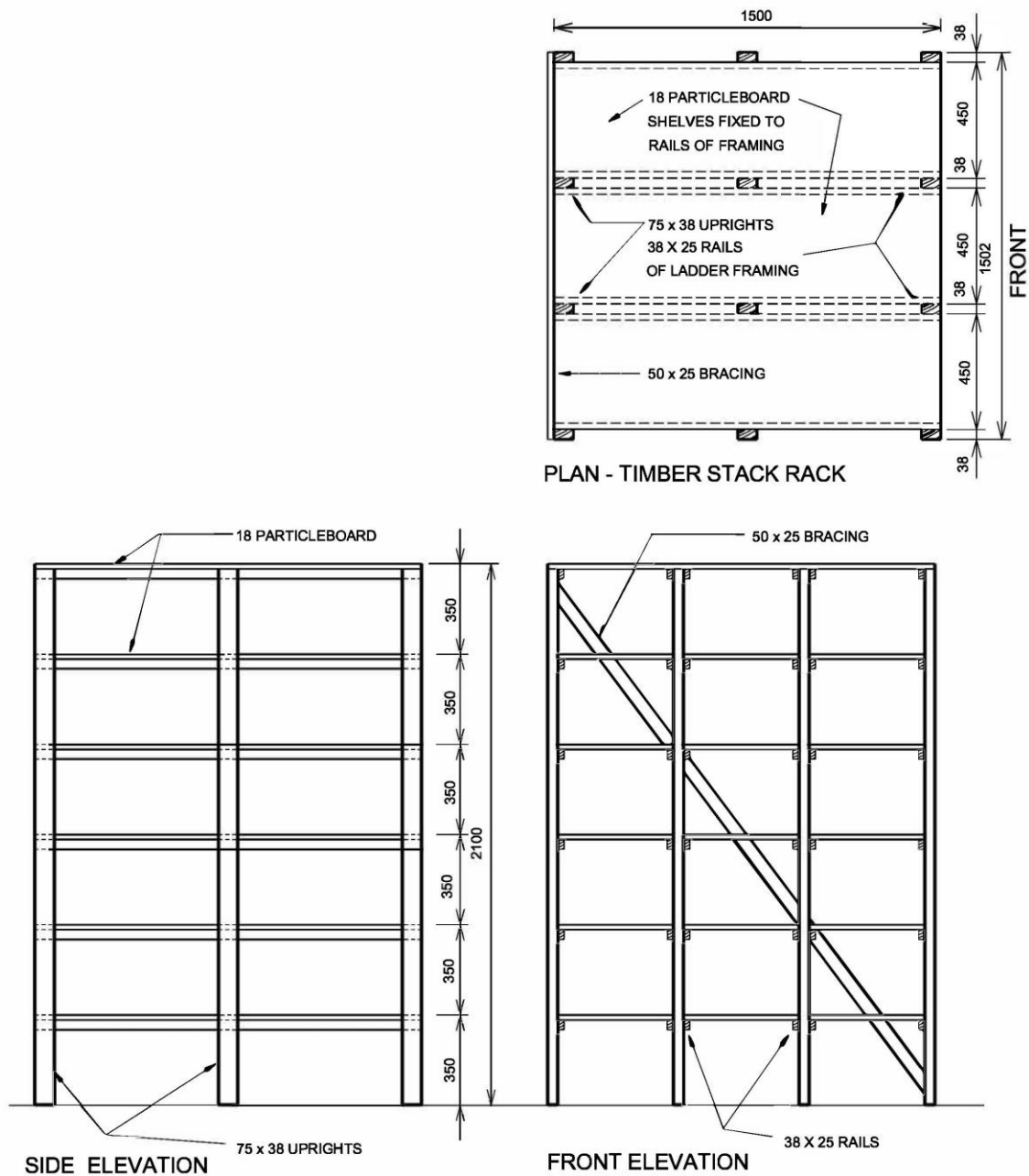


Figure 02: Rack Timber Stack

Location: Wood and Metal Store

Construction

Provide a timber stack, framing in Radiata Pine with 18 mm thick edge stripped particleboard shelving as shown on the Drawings. On completion leave unfinished.

- Stack: 1500 x 1500 x 2100 mm high
- Framing: 75 x 38 mm uprights, 38 mm x 25 mm rails
- Bracing: 50 x 25 mm

04.19 Rack Module for Sheets – Timber

Location:

Construction

Fabricate rack out of 18 mm thick edge stripped particleboard providing 7 vertical intermediate divisions and a 100 mm high kickplate.

- Backing: Sheet back with 7 mm Pinus structural A bond glueline plywood
- Base: 100 x 50 mm (nominal) supports at 600 mm centres
- Kickplate: 100 x 25 mm (nominal) timber set back 50 mm
- Size: > wide x > deep x 2600 mm high.

GUIDE NOTE: Include appropriate dimensions. Dimensions may vary according to project requirements.

04.20 Shelving for Pottery

Location:

Construction

Frame up rack fixing top and bottom shelves, brace ends with galvanised iron bracing and provide adjustable and fixed shelves as shown on the drawings.

- Rack: 600 deep x 2640 wide x 2020mm high Frame (DAR): 75 x 38mm
- Runners (DAR): 38 x 25mm Fixing: Glued and screwed
- Back: 6 mm plywood sheet glued and pinned to extent shown on the drawing

-
- Shelving (DAR): 50 x 25 mm equally spaced battens screw fixed to 50 x 25mm timber battens.
 - Finish:

04.21 Rack for Discus

Location:

Construction

Provide two slotted timber rails where one is fixed to the wall and the other to an edge stripped particleboard base secured to the floor. Co-incide slots in rails to vertically carry discus.

- Size: 300 deep x 250 mm high x length to suit
- Base: 100 x 50 mm on edge at 600 mm maximum centres HMR particleboard: 25 mm
- Kickplate: Out of 50 mm (nominal) timber to match, set back 25 mm including both end returns Wall rail: 50 x 41 mm (finished)
- Base rail: 60 x 50 mm (nominal) with bearing face splayed 30 degrees Rail fixing: Screw fix at 300 mm maximum centres
- Finish: 2 coats clear polyurethane.

04.22 Rack for Shot Put

Location:

Construction

Provide 3 inverted galvanised mild steel angles fixed to an edge stripped particleboard base secured to the floor

- Size: 300 deep x approximately 150 mm high x length to suit
- Base: 100 x 50 mm on edge at 600 mm maximum centres HMR particleboard: 25 mm
- Kickplate: Out of 50 mm (nominal) timber to match, set back 25 mm including both end returns
- Angles: 50 x 50 mm screw fixed to base at 300 mm maximum centres, space inverted flanges 30 mm apart.
- Finish: 2 coats clear polyurethane

04.23 Rack for Javelins

Location:

Construction

Pre-drill recesses to bottom rail and secure to floor by masonry anchors: Fix proprietary stainless steel spring clips to top rail coinciding to recesses and secure to wall by masonry anchors.

- Rack
 - Size: 900 wide x 1500mm high
 - Finish: 2 coats polyurethane
- Bottom rail
 - 100 x 50mm (nominal) with 8mm splay.
 - Recesses: 30 mm diameter x 12mm depth at 8 mm maximum centres
- Top rail
 - 100 x 25mm
 - Clips: 32mm diameter at 8mm maximum centres

04.24 Floor Batten for Spring Boards

Location:

Construction

- Secure to floor a batten as indicated on the drawings
- Size: Nominal 50 x 25 x 3000 mm

04.25 Rack for Bats

Construction

Construct from 18 mm thick edge stripped particleboard front, back, sides, main divisions and base. From 12 mm thick edge stripped particleboard provide "eggcrate" divisions between the main divisions as detailed on the drawings.

- Size: 670 deep x 2390 long x 720 mm high
- Base support: 100 x 50 mm on edge at 600 mm maximum centres
- Kickplate: Out of 25 mm (nominal) timber to match set back 50 mm

-
- Front gap: Allow a 150 mm high gap above base fixing only the main divisions and ends to base
 - Finish: 2 coats clear polyurethane

04.26 Sports Shelving

Location:

Construction

Fabricate out of 19 mm thick strip edged particleboard a base and two shelves fixed to 3 ladder frames with back and front support rails and screw fix to wall.

- Size: 1800 long x 600 wide x 1300 mm high
- Base support: 100 x 50 mm on edge at 600 mm maximum centres
- Kickboard: 100 x 25 mm (nominal) timber set back 50 mm
- Ladder frames: 50 x 25 mm
- Back and front rails: 50 x 25 mm
- Finish: 2 coats clear polyurethane

04.27 Adjustable Shelving, Timber (Music Store)

Location:

Construction

Provide out of 18 mm thick edge stripped particleboard adjustable shelving to suit bush and rest pin brass shelf supports.

- Shelf Bays: 600 mm wide or 900 mm wide by 2100 mm high
- Depth:
- Base: From 18 mm thick edge stripped particleboard on 75 x 50 mm supports
- Kickplate: Out of 25 mm (nominal) timber to match setback 25 mm
- Adjustable Shelves:
 - Number required: 4
 - Adjustment: 50 mm centres

04.28 Acid bay Shelving

Location:

Construction

- Material: 18 mm thick compressed fibre cement sheet
- Requirement: Provide 3 removable shelves to detail and position as shown on the drawings

04.29 Plywood Shelving

Location:

Construction

- Requirement: Provide 5 edge stripped plywood shelves with suitable wall stripping
- Material: Interior plywood
 - Grade: C-D
 - Thickness: 18 mm
- Installation: Mount the wall stripping so that the lowest shelf is 300 mm and highest 1800 mm high above the floor.

04.30 Fan Support Brackets

Location: To all fan location points under metal roof decking

Construction

- Requirement: Construct support brackets out of 100 mm x 50 mm timber noggings and blocking between roof purlins.

04.31 Light Support Brackets

Location: To all light fitting points under metal roof decking

Construction

- Requirement: Construct supports using 100 x 50 mm timber noggings, fixing 2 between roof purlins 900 mm apart to suit surface mounted light fitting fixing holes.

04.32 Timber Shelving, Adjustable - Chemical Store

Location:

Construction

- Shelving: 19mm (finished thickness) DAR timber adjustable shelving to suit bush and rest pin brass shelf supports.
- Shelf Bays: 900mm wide x 2100mm high. Each bay is to be constructed out of 18 mm thick edge stripped HMR (moister resistant) particleboard to form solid vertical divisions.
 - Depth:
 - Base: 19mm (finished thickness) DAR timber on 75 x 50mm (nominal) timber supports
 - Kickplate: 25mm (nominal) thick timber. Setback 25mm
- Adjustable Shelves
 - Number required: 4 Adjustment: 50mm centres
 - Finish: Two pack polyurethane clear interior finish

04.33 Timber Shelving, Adjustable - Pantry.

Location:

Construction

- Provide slotted shelf supports with laminated and edge stripped HMR particleboard shelves
- Shelf bays: As shown on drawings
- Width: 400 mm+
- Shelf supports: Proprietary heavy-duty steel double slotted U shaped slotted uprights for wall mounting.
 - Centres: 600 mm (maximum)
 - Length: 2100 mm (from finished floor level to top of shelf support)
 - Fixing: Fix securely to wall with appropriate anchors. When fixing to a stud wall the uprights must be fixed to the studs
- Brackets: Compatible proprietary brackets designed to fit the double slotted wall upright system. All brackets are to come complete with metal shelf locating/fixing clips.
 - Length: The end of the brackets to finish near the edge of the shelves (maximum 50 mm)
 - Number: 6 per upright
- Shelf support finish: Epoxy/polyester.

GUIDE NOTE: Include colour. Check with manufacturer/supplier for range and availability of colours.

- Shelf support colour:
- Shelving type: Melamine overlaid particleboard, overlaid on both sides with low pressure melamine. All exposed edges to be edge stripped with 2 mm thick rigid PVC. All edges to match tops
- Shelf thickness: 19 mm (minimum)
- Shelf overhang: No more than a 1/16 of the total shelf length to overhang the bracket at each end
- Shelf number: 6 levels evenly spaced (extent of shelving shown on drawings)

GUIDE NOTE: Include colour. Check with manufacturer/supplier for range and availability of colours.

- Shelf colour:

04.34 Shelf with Deep Edge - Toilet

Location: Moderate Unit – Toilet

Construction

- Provide a particleboard shelf with a 100 mm deep edge as shown on drawings
- Fixing: Fix to underside of shelf through pre-drilled holes in shelf brackets with galv. screws suitable for particle board
- Finish against wall with white silicon mastic, gunned in, waterproof seal
- Brackets: Refer to 0552 Metalwork fabricated
- Finish: Laminate plastic finish moulded to suit surface

04.35 Shelf – Toilet

Location: Support Unit

Construction

- Provide a 2000 long x 300 mm wide HMR particleboard shelf at 1500 mm from floor

Location: Access Toilet and/or Access Shower/Toilet

Construction

- Provide a 600 long x 150 mm wide HMR particleboard shelf at 950 mm from floor with radius corner.
- Standards: All fittings and installation must comply with AS1428.1.
- Fixing: Fix securely to underside of shelf through pre-drilled holes in shelf brackets with galvanised screws suitable for particle board.
- Finish: Laminate plastic finish moulded to suit surface and as specified. Finish against wall with white silicon mastic, gunned in, waterproof seal.
- Brackets: 30 x 30 x 5 mm thick mild steel angle hot dipped galvanised bracket. The bracket is to be of sufficient length to provide adequate support to shelf and secure fixing to wall.
 - Fixing: Fix securely to wall
 - Spacing: Maximum 450 mm centres

04.36 Vanity Shelf

GUIDE NOTE: Insert project specific locations.

Location:

General: Provide angle brackets with laminated and edge stripped HMR particle board shelf.

Construction

- Melamine overlaid HMR particleboard, overlaid on both sides with low pressure melamine. All exposed edges to be edge stripped with matching 2 mm thick ABS. Size: 600 x 150 mm
- Thickness: 18 mm (min)
- Fixing: Screw fixed to angle brackets (2 screws over bracket)
- Seal: Finish against wall with white silicon mastic, gunned in, waterproof seal

GUIDE NOTE: Include colour. Check with manufacturer/supplier for range and availability of colours.

- Colour:
- Brackets: Two hot dipped galvanised angle brackets to support shelf
- Bracket fixing: Securely fix to wall with appropriate fasteners

04.37 Basketball Backboard

Location: Games Court

Construction

- Waterproof plywood backboard bolted securely to frame as shown on drawings
Size: 1800 x 1050 mm finished
- Thickness: 12 mm (minimum)
- Graphics: Generally semi-gloss white enamel with edges and 50 mm line markings in semi-gloss black enamel as shown on the drawings and as specified in 0671 - Painting.

04.38 Infill to side of B11

GUIDE NOTE: Include list of locations where infills to side of B11 are required.

Location:

Construction

- Construct infills in the location and out of the materials, species, sizes and profiles as shown on the drawings.
- Infills are to be finished to match surrounding bench cupboards and dividers

04.39 Exercise Bar (Barre)

GUIDE NOTE: Insert project specific locations.

Location:

Construction

- General: Dressed timber rail securely screw fixed to MS support assembly.
- Rail: 50 mm (finished size) diameter.
- Timber species: Douglas Fir (Oregon) or Western Hemlock (Canada Pine): For select dressing purposes: To AS 2440.
- Joints: All joints to be located over the centre of the MS rail support "T" bracket.
- Finish: Clear finish: Refer to 0671 – Painting.

- Support assembly: Refer to 0552 - Metalwork fabricated.

04.40 Timber Stairs

- Nosings
 - General: Provide a pre-formed anti-slip metal backed step nosing in contrasting colour to delineate each tread.
 - Standard: To AS 1428.1.

Reference drawings

GUIDE NOTE: Refer to EFSG drawing below and include into appropriate project drawing package and number. Do not use as a construction detail. Not to Scale

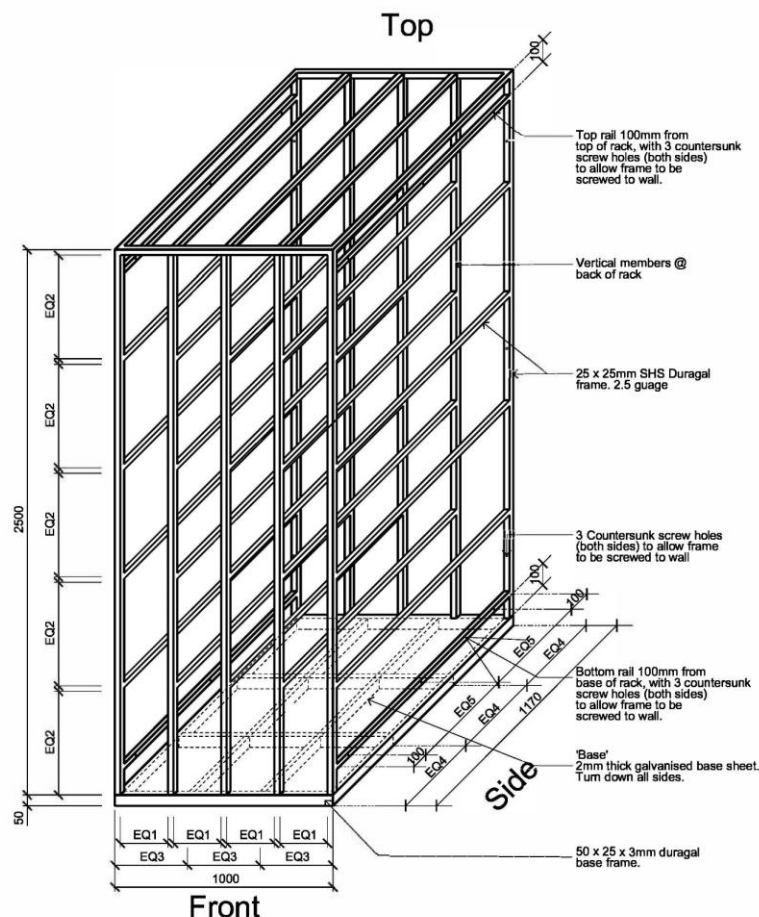


Figure 03: Rack Modules for Sheets

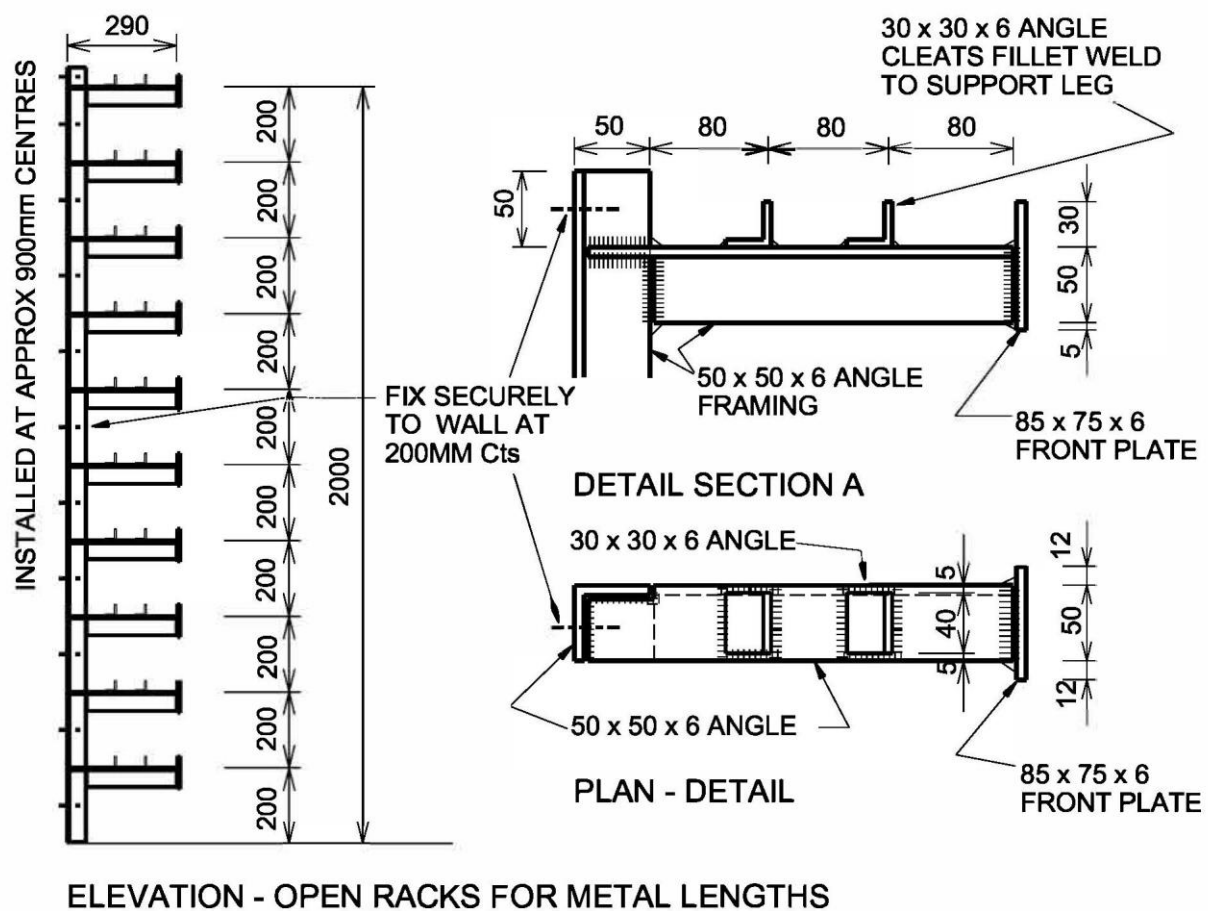


Figure 04: Rack for Metal Lengths

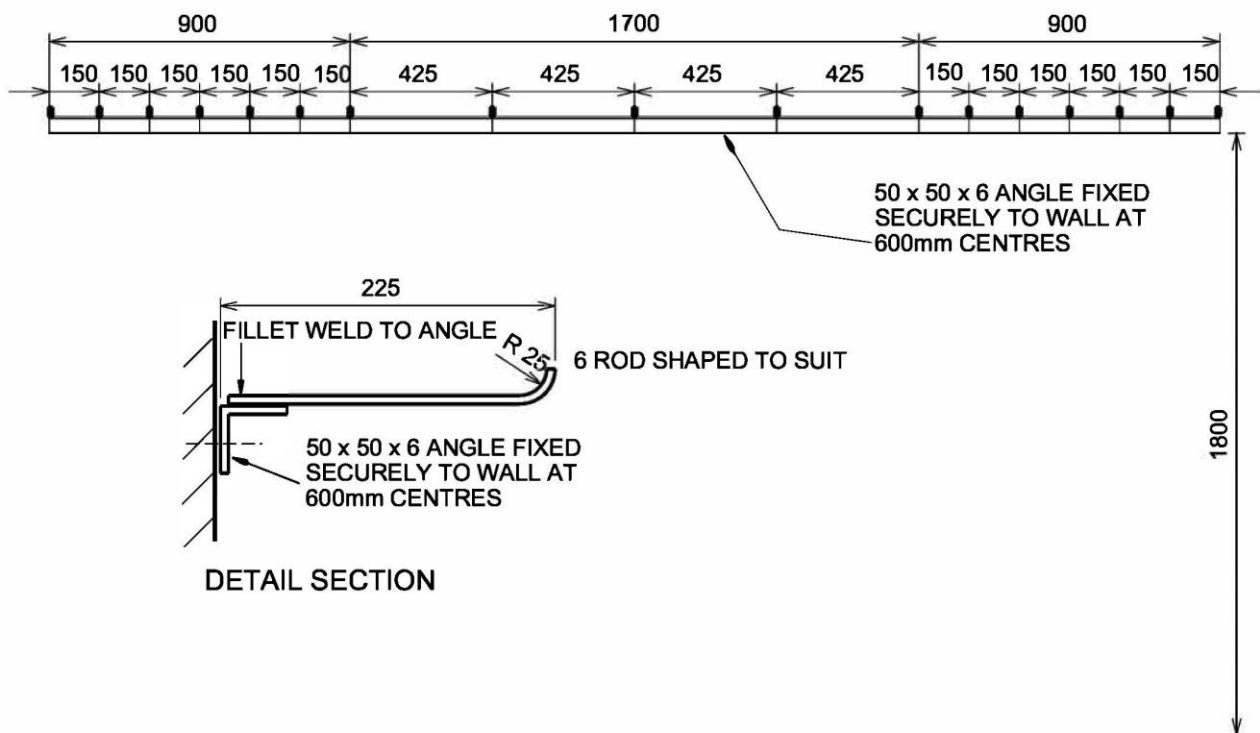
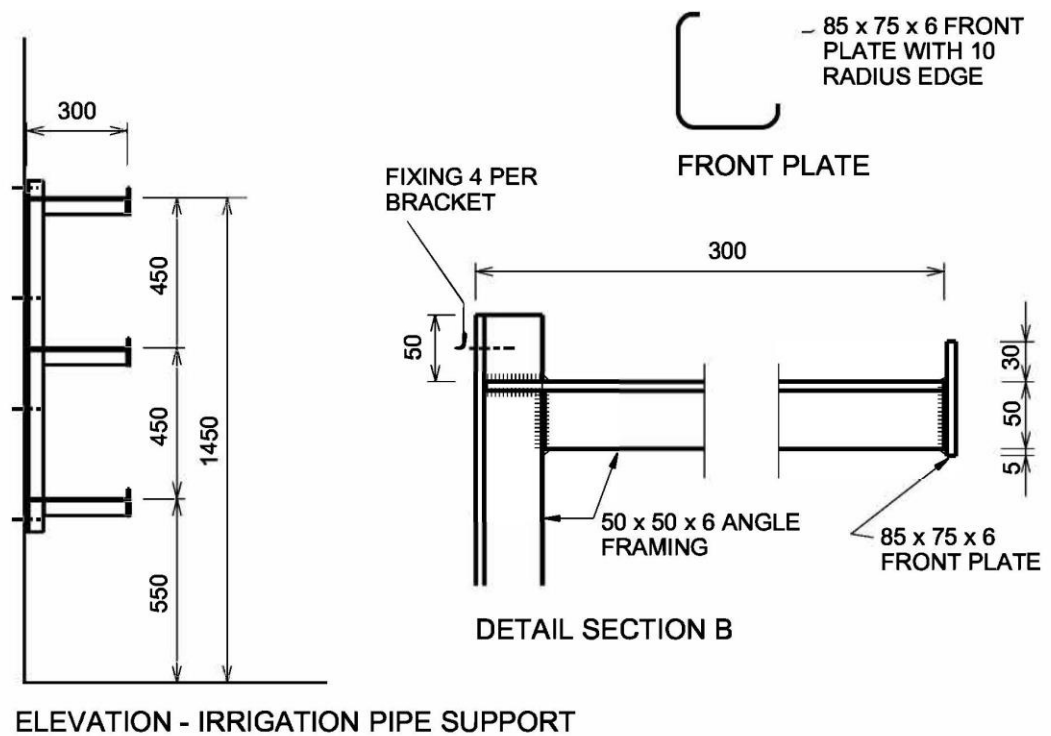


Figure 05: Rack for Tools Storage